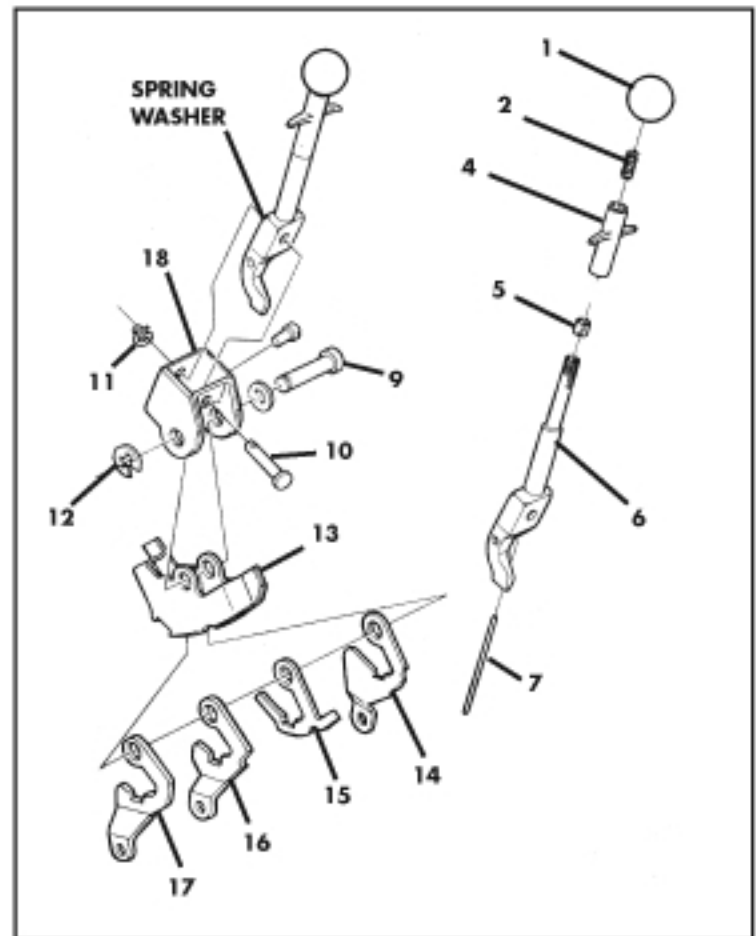


# 1964-67 Major Repair Kit Installation (SH005L)

1. Unscrew knob.
2. Lift off lock-out rod spring.
3. Remove T-handle  
(lock out rod should come with handle)
4. Remove retainer #12
5. Pull out shaft #9
6. Pull bracket #13 apart  
(containing levers #14-17)
7. Remove retainer #11
8. Pull out pin #10
9. Shaft #6 and washer will slide out the  
bottom of bracket #16
10. Clean all parts with solvent
11. Check all parts not supplied in kit for  
cracks, excessive wear, etc. Normally  
these parts are useable. However if  
there is a defect found, the part can be  
bought at your Corvette dealer.
12. Lubricate levers #14, #16, #17 and  
new interlock #15 with white grease.  
If levers are loose side to side, use  
thicker interlock. If not loose use thinner  
interlock.
13. Lubricate inside of bracket #13; install  
levers with interlock in bracket #13 in  
proper order (as in drawing)
14. Lubricate shaft #6 and bracket #18  
at pivot points; also lubricate new  
shaft #9 and pin #10
15. Slide shaft #6 up through bracket #18
16. Install pin #10 and retainer #11
17. Install bracket #13 into bracket #18 with  
shaft #6 falling on the left side of the  
interlock #15 (when looking from  
the back of shifter)
18. Install shaft #9 and retainer #12
19. Lubricate lock-out rod #7
20. Install T-handle with lock-out rod  
& spring #4, #7, #2
21. Screw knob #1 onto shaft #6



## Parts List:

### SH005L Repair kit (Major) 1964-67

SH013	SHIFTER KNOB (3&4 SPEED) CHROME
SH017	SHIFTER LOCK OUT SPRING (3&4 SPEED)
SH022	HANDLE WITH LOCKOUT ROD W/BUSHING
SH029	SHIFTER CONTROL LEVER PIN LOWER
SH030	SHIFTER CONTROL LEVER LIN LOWER RETAINER
SH032	SHIFTER CONTROL LEVER SHAFT
SH033	SHIFTER LOWER SHAFT RETAINER
SH037	SHIFTER REVERSE LEVER INTERLOCK (THIN 5/64)
SH037A	SHIFTER REVERSE LEVER INTERLOCK (THICK 7/64)
SH027	SHIFTER SHAFT SPRING WASHER