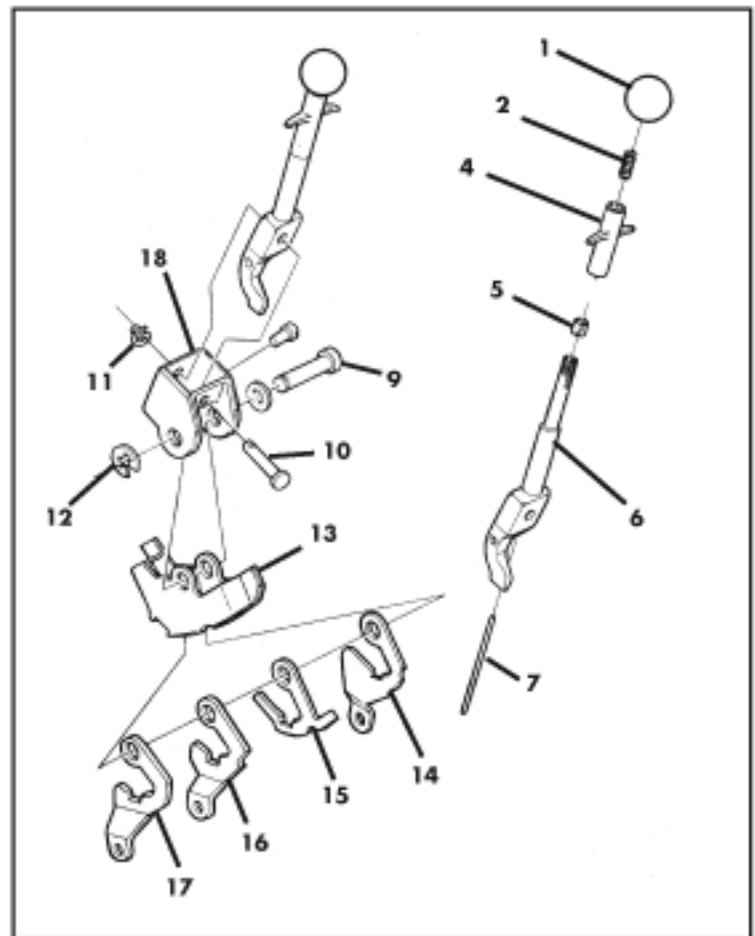


1968-81 Major Repair Kit Installation (SH005N, SH005P)

1. Unscrew knob.
2. Lift off lock-out rod spring.
3. Remove T-handle
(lock out rod should come with handle)
4. Remove retainer #12
5. Pull out shaft #9
6. Pull bracket #13 apart
(containing levers #14-17)
7. Remove retainer #11
8. Pull out pin #10
9. Shaft #6 and washer will slide out the
bottom of bracket #16
10. Clean all parts with solvent
11. Check all parts not supplied in kit for
cracks, excessive wear, etc. Normally
these parts are useable. However if
there is a defect found, the part can be
bought at your Corvette dealer.
12. Lubricate levers #14, #16, #17 and
new interlock #15 with white grease.
If levers are loose side to side, use
thicker interlock. If not loose use thinner
interlock.
13. Lubricate inside of bracket #13; install
levers with interlock in bracket #13 in
proper order (as in drawing)
14. Lubricate shaft #6 and bracket #18
at pivot points; also lubricate new
shaft #9 and pin #10
15. Slide shaft #6 up through bracket #18
16. Install pin #10 and retainer #11
17. Install bracket #13 into bracket #18 with
shaft #6 falling on the left side of the
interlock #15 (when looking from
the back of shifter)
18. Install shaft #9 and retainer #12
19. Lubricate lock-out rod #7
20. Install T-handle with lock-out rod
& spring #4, #7, #2
21. Screw knob #1 onto shaft #6



Parts List:

SH005N Repair kit (Major) 1968-76

- | | |
|---------------|--|
| SH016 | SHIFTER KNOB (3&4 SPEED) BLACK |
| SH019 | SHIFTER LOCK OUT SPRING (3&4 SPEED) |
| SH023 | HANDLE WITH LOCKOUT ROD |
| SH029 | SHIFTER CONTROL LEVER PIN LOWER |
| SH030 | SHIFTER CONTROL LEVER LIN LOWER RETAINER |
| SH032 | SHIFTER CONTROL LEVER SHAFT |
| SH033 | SHIFTER LOWER SHAFT RETAINER |
| SH037 | SHIFTER REVERSE LEVER INTERLOCK (THIN 5/64) |
| SH037A | SHIFTER REVERSE LEVER INTERLOCK (THICK 7/64) |

SH005P Repair kit (Major) 1977-81

- | | |
|---------------|--|
| SH016 | SHIFTER KNOB (3&4 SPEED) BLACK |
| SH019 | SHIFTER LOCK OUT SPRING (3&4 SPEED) |
| SH024 | HANDLE WITH LOCKOUT ROD |
| SH029 | SHIFTER CONTROL LEVER PIN LOWER |
| SH030 | SHIFTER CONTROL LEVER LIN LOWER RETAINER |
| SH032 | SHIFTER CONTROL LEVER SHAFT |
| SH033 | SHIFTER LOWER SHAFT RETAINER |
| SH037 | SHIFTER REVERSE LEVER INTERLOCK (THIN 5/64) |
| SH037A | SHIFTER REVERSE LEVER INTERLOCK (THICK 7/64) |